



SSIS

Innovative Technology...
...Smart Solutions!



Self- Password Manage AD Report Tool (MARSHAL)

MARSHAL is a secure, web-based, end-user password reset management program. This software helps the domain users to perform password reset on their own, self-service account unlock and employee self-update of the personal details (e.g. telephone numbers, etc) in Microsoft Windows Active Directory. MARSHAL also helps to manage and monitor the operations of the AD service and ensures that the AD is behaving accurately. Administrators find it easy to automate password resets, account unlocks while managing and optimizing the expenses associated with helpdesk call.

Software that can automate these cumbersome tasks, simplify AD management and provide exhaustive reports on tasks done and their status is the need of the hour. MARSHAL is one simple, hassle-free web-based solution for all Active Directory Management challenges, safe with secure authentication and performs all actions with just mouse clicks. This Active Directory management tool allows administrators to design templates to manage all Active Directory account creation and modification processes. Moreover, through its web-interface, this AD management software offers administrators an absolute control over their Active Directory environment.

Key Benefits

- ◆ Self Password rest Facility on Mobile Apps.
- ◆ Auto Reminder notification for password expired.
- ◆ Eliminates repetitive, mundane and complex tasks associated with AD Management.
- ◆ Automates routine AD Management and Reporting activities for AD Administrators.
- ◆ Facilitates Creation, Management and Deletion of AD objects.
- ◆ Provides move AD user management capability.
- ◆ users can share workload of administrators and let them concentrate on core administrative activities
- ◆ Acts as an essential resource during Compliance Audits.



Features

Active Directory Password Management

MARSHAL is providing Self Service Reset Password facility. This solution allows end user to reset his password by using Mobile, Computer with web interface to send OTP on his mobile through SMS and reset his password within second. When any user expired or forgot his password, this tool helps to rest his password. It also helps to administration for reducing his work load.

MARSHAL built-in dedicated feature aimed at reducing the problem in managing a single and multiple user passwords from a central point in your domain.

Following set of operations with respect to password and password management on a user account in Active Directory

- ◆ Configure Settings that User must change passwords at next logon.
- ◆ Reset multiple user account passwords.
- ◆ Enable, Disable or Delete users, if their passwords are expired.





Active Directory User Management

MARSHAL helps you to create and modify users, configure their general attributes. Further, this Active Directory management solution also allows AD managers to design templates that allow them or their help desk technicians to create and modify user accounts to configure all the required attributes / properties in just one single action. It is simple to manage thousands of your Active Directory users through its bulk user operation and easy-to-work interface. Move them between organizational units and enable/disable them.



Approval process for new user Creation

MARSHAL helps you to set approval process for new user creation. Creator creates new user request and approver first reviews new user details, then approves or rejects request. After approved request, then record will be created into Active Directory at the same time logs to be maintained by software.



Active Directory Bulk User Management

Managing user accounts in Microsoft Active Directory is an open challenge to every IT administrator. Manual configuration of user properties using the native Active Directory tools is extremely time-consuming, tiresome, and error-prone, especially in large and complex windows network. Moreover, an in-depth knowledge of Active Directory and Active Directory management is an essential requirement to accomplish these tasks.

MARSHAL is web-based software that allows you to create and manage multiple user accounts in the Active Directory in a single action. Using this it allows you to create multiple templates that contain standard user attribute values, which can be applied while creating users in bulk. You can import the user attributes from a single CSV file while creating user accounts, thereby minimizing the time and efforts needed when the native tools are used for Active Directory user provisioning.



Active Directory Computer Management

MARSHAL's solution allows you to manage all the computers in your environment from anywhere, at one go. You can move Computer Objects between organizational units. This tool helps us to enable/disable computer objects.

It also helps to delete Computer Objects for particular organizational units and provide computer object-related reports for monitoring details. It provides OS-wise Computer Report, Enable/Disable Computers report, View OU-wise all computers Report.

Active Directory Help Desk Delegation

It becomes difficult for the IT department to manage the entire Active Directory in a timely, error-free and efficient manner, thus making 'Delegation of Active Directory tasks' crucial. With native Active Directory tools, delegation becomes yet another tedious and cumbersome task. MARSHAL, web-based Active Directory Management & Reporting software provides the much-needed ability to delegate routine Active Directory Management and support tasks throughout the enterprise with its powerful 'Active Directory Help Desk Delegation' feature. It allows the AD administrator to delegate tasks to non-administrative users like help desk technicians or front-line officials, with appropriate authentication and authorization controls that dramatically reduce the work load on the AD Administrator. This easy-to-use Active Directory Utility thereby helps to save a lot of time, cost and effort.



With MARSHAL you can create user groups to ensure that the right people have access to the right information. Many of our clients choose to segregate access to information based on location, department or job position. For example, managers at the head office can view and analyze cases from all locations, but a service manager in a different location office can only access issues for that location.



Access denied for Users on last working date

MARSHAL is solution allows you to manage auto disable users. IT Admin or HR Person will be update last working date of user in the Portal and with the help of set scheduler and program will be execute automatically and find all list of user having last working date then one by one from the list auto move this user into different OU (Deleted OU) deleted OU and update logs into Portal.



Reminder Notification

MARSHAL helps to create notification Plane such as send auto reminder notification before users whose will expire passwords. When scheduler has been completed all AD Objects synchronization activities then automatically system will be sent synchronization status notification to respected user.

MARSHAL helps to send automatically bulk reminder notification to users.



Auto Synchronization Objects

MARSHAL helps to auto synchronize AD Objects such as organizational units, Users, Computers. It helps to maintained centralize data management. Someone can directly cerate or update AD Objects into AD server, this feature helps to maintained common object details AD as well as Application.



Integration

MARSHAL integrates easily and cost-effectively you're your existing systems. This tool helps us to integrate between multiple applications and provide centralized database for accurate output results display. MARSHAL helps to connect multiple sources and fetch the details. This solution provides single point of communication into the organization.

MIS Reports

The MARSHAL system provides the following reports for Administrators

General User Reports

- ▶ All Users Report
- ▶ Users with Empty Attributes Report
- ▶ Recently created users
- ▶ Recently updated users

User Account Status Reports

- ▶ Enabled user Report
- ▶ Disabled Users Report
- ▶ Locked Out Users Report
- ▶ Account Expired Users Report
- ▶ Account Never Expiry Users Report
- ▶ Unlock Users Report

User Logon Reports

- ▶ Inactive Users Report
- ▶ Logon days Based Report
- ▶ Users Never Logged On Report

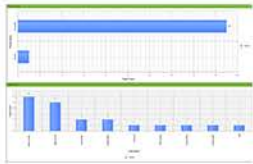


Password Reports

- Users whose passwords never expires Report
- Password Expired users Report
- Password Reset Report

Computer Reports

- Get all computers
- Inactive Computers
- Disabled Computers
- Enabled Computers
- OS Based Report
- Deleted computer Report
- Recently created computer
- Recently updated computer



Dashboards

The MARSHAL system provides interactive dash board for Monitor and Analyze AD Objects Such as Users, Computers.

MARSHAL provide graphical representation of AD Objects details with total no. Of users, Computers and its status like enable, disable.



Report Export to Excel & Report Emailing

All the reports of MARSHAL can be exported to Excel/ CSV and the same can be emailed to the respective stakeholders.

Customization

GUI Level Customization

MARSHAL will be helps you to provide customized Graphical User Interface as per your standard. MARSHAL providing facilitates to change Logo, colour combination on screen, provide customize screen, Modify Text and Images.

Functional Level Customization

MARSHAL will be provided customize application as per your need. Customization on the bases of additional fields, additional form, additional report and customize existing reports.

